

# WORKSURFACE LAMINATES



Choose from hundreds of high-pressure laminates for the worksurface top. Most orders use Wilsonart laminate, but we can also supply Formica, Nevamar, and Pionite (cost and leadtime may vary, please inquire for details).

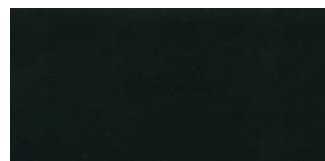
# STANDARD EDGE BAND COLORS



FOLKSTONE



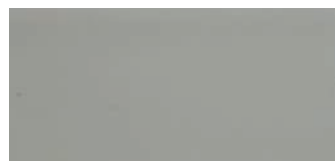
SHADOW



BLACK



GRAPHITE NEBULA



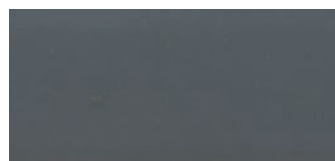
FOG



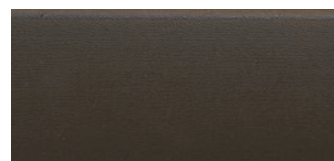
FUSION MAPLE



FONTHILL PEAR



STORM



GRAPHITE



KHAKI BROWN

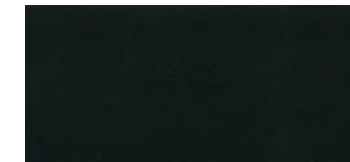
# STANDARD PANEL COLORS (surfaces other than desktops)



FOLKSTONE



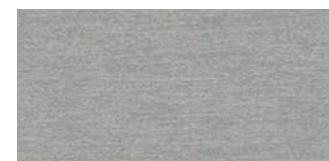
SHADOW



BLACK



GRAPHITE SPECTRUM



SILVER FROST



FUSION MAPLE



PEARWOOD

### IMPORTANT COLOR INFORMATION:

This is intended as a general overview of the colors available, however, due to limitations of the printing process, this is not a perfect representation. Before finalizing your color choices, we recommend that you view physical samples of laminate, edgeband, and side panel colors. Color availability subject to change without notice.

# LEG CHOICES AND OTHER COLORS



### LEG COLORS



All legs are available in either Black or Mineral (silvertone) powder-coat finish.



ADJUSTABLE HEIGHT PEDESTAL LEGS  
(caster or glide)



ARC-LEGS  
(caster or glide)



ADJUSTABLE ARC-LEGS  
(glide only)

**PLASTIC**  
The patented ShuttleLatch and other plastic components (for example, ShuttleMate optional wire management tray) are available in Black or Gray.

**HARDWARE**  
Fasteners are bright zinc plated or black. Hinges and standard drawer pulls are silver.

**METAL**  
ShuttleZone metal wire management tray is available in silver or black powdercoat. Cabinet corner extrusions are matte silver anodized, with gray or black extruded trim.